



# NBS EASTERN REGION

## WINTERFEST 2009

Smugglers Notch, Vermont  
March 5<sup>th</sup> – 8<sup>th</sup>, 2009



**\$655** pp/ 3 nights    **\$725** pp/ 4 nights

**INCLUDES:**

- Lodging and Transportation
- NBS Parties and Picnic (Registration Package)
- Includes 3 or 4 Day Lift Tickets
- NBS rates on Ski Clinics

**Payment Schedule:**  
Pay in full by Feb 18<sup>th</sup>,  
After Feb 18<sup>th</sup> Add \$20

Smuggler's Snow Sport University features children's Ski and Snowboard all day camps including lunch; Discovery Dynamos for ages 3-5, Adventure Rangers for ages 6-10, Notch Squad for ages 11-14 and Mountain Explorers for ages 15-17:  
1 Day - \$59, 2 Days - \$99, 3 Days - \$129

**Non- Members: Add \$45**

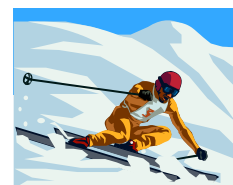
**Rental Rates Add ( Adult / Youth):**

1 Day - \$25/\$20    2 Days - \$46/\$35    3 Days - \$67/\$50    4 Days - \$88/\$65

### Never Ever / Non Skier

**\$545** pp/ 3 nights

Lift Tickets includes rental and 1.5 hour lessons:  
1 Day - \$20    2 Days - \$35    3 Days - \$55



Tripleader: Shawn Thomas [thomaslshawn@aol.com](mailto:thomaslshawn@aol.com)  
Co-Tripleader: Roderick Lewis [fdlt91@aol.com](mailto:fdlt91@aol.com) / 917-748-6641

